

What is Critical Environment?

Critical Environment is a space where air distribution and air quality are essential to the satisfactory outcome of the task or process being performed.

Critical Environment Applications

- Hospital Patient Rooms
- Operating Rooms
- Isolation Rooms
- Research Laboratories
- Food Processing
- Animal Laboratories
- Server Rooms
- Scientific Laboratories
- Biotechnology Research
- Pharmaceutical Manufacturing
- Water and Wastewater Treatment
- Data Centers
- Telephony Switch Rooms
- Electronics Manufacturing
- Automotive Painting



DID YOU KNOW? Shoemaker offers a full-line of high quality HVAC products for all of your commercial projects:



VISIT

www.shoemakermfg.com

A complete list of products, services, performance data and technical drawings on more than 19,000 different items are always available on our website.

Distributed by:

FOOD PROCESSING • HOSPITAL PATIENT ROOMS
 ANIMAL LABORATORIES • SERVER AND DATA ROOMS
 OPERATING ROOMS • BIOTECHNOLOGY RESEARCH
 PHARMACEUTICAL MANUFACTURING • WATER AND
 WASTEWATER TREATMENT • COMPUTER CENTERS
 TELEPHONE SWITCH ROOMS • ISOLATION ROOMS
 ELECTRONICS MANUFACTURING
 AUTOMOTIVE PAINTING • INTENSIVE CARE UNITS

Where
 air distribution
 and air quality
 are essential.

Critical Environment



Shoemaker products are everywhere - in your home, your place of work, grocery stores, restaurants - basically anywhere that uses forced air to control the temperature of the environment. We've been manufacturing registers, grilles, and diffusers for residential, commercial and industrial markets since 1947, more than 65 years!

Fan Powered Laminar Flow HEPA Filter Diffuser

Uses vertical air mass "laminar flow" technology

Produces non aspirating, low velocity, uniformly distributed downward moving conditioned air

Can be used separately or linked together

Maintains a sterile environment directly below the unit and creates a boundary layer of air, isolating critical areas such as operating tables

Options: HEPA/ULPA Filter
LED Indicator Light

Hinged Radial Diffuser with 90° or 180° Radial Flow Pattern

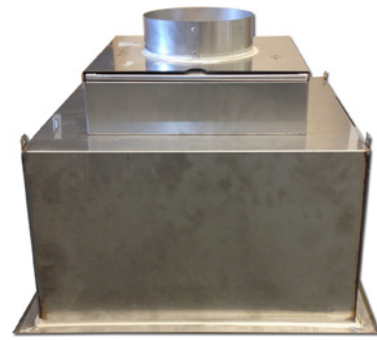
Provides low aspiration at high ventilation rates

Solid baffles in an intrusive perforated face handle large volumes of air with low initial face velocities

Curved diffuser face hinges down providing easy access for cleaning and sanitation

Ideal for research and animal labs, food processing, hospital rooms and computer rooms

Options: HEPA/ULPA Filter



5700
Series



5185
Series

Flat Radial Pattern Diffuser with 90° or 180° Radial Flow Pattern

Provides low aspiration at high ventilation rates

Internal baffles and pressure plate produce a 90° or 180° radial air pattern

Unobtrusive flat face design provides the smooth appearance required by architects and designers

Ideal for research and animal labs, food processing, hospital rooms and computer rooms

Options: HEPA/ULPA Filter
Drop Face Design



5160
5165
Series

Hemispherical Diffuser

Adjustable pattern control technology for delivering high volumes of low velocity air in a radial pattern

High airflow capacity, excellent choice for Class 1,000 to 100,000 rooms

Can be used in applications such as labs with exhaust hoods, pharmaceutical manufacturing and biotechnology research

Options: HEPA/ULPA Filter



5500
Series

Perimeter Slot Diffuser

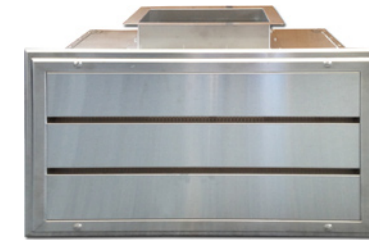
Designed to provide an air curtain for hospital operating rooms

Unique slot design creates a continuous curtain of air angled outward at 5° to 15° minimizing the possibility of contaminated air entering the surgical area

Double slot design creates a uniform velocity curtain and wider velocity profile, less turbulence and therefore less induction compared to similar two slot designs

Sections can be joined to create a continuous curtain of air

Options: Inlet Balancing Damper
Opposed Blade Damper



5600
Series

HEPA and ULPA Filters

HEPA filters have 99.99% min. removal efficiency on 0.3 micrometer particle size

ULPA filters have 99.995% min. removal efficiency on 0.12 micrometer particle size

Anodized aluminum Gel Seal frame for leak-tight connection

Separatorless 2" deep media pack and integral test port standard

UL 900 Class I Listed



HEPA
ULPA
Series

Laminar Flow Diffuser Panel

Uses vertical air mass "laminar flow" technology

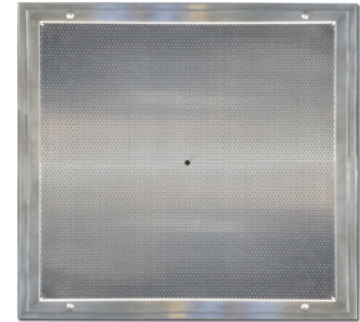
Produces non aspirating, low velocity, uniformly distributed downward moving conditioned air

Can be used separately or linked together to provide one large combined laminar mass

Maintains a sterile environment directly below the unit and creates a boundary layer of air, isolating critical areas such as operating tables

Available in standard, medium and high capacity airflow

Options: HEPA/ULPA Filter
LED Indicator Light



5300
5350
5375
Series



For the full line of Critical Environment products and specifications visit:

www.shoemakermfg.com/critical-environment

Questions?
We are here to help.

sm@shoemakermfg.com

(866) 940-0696

(509) 674-4420

www.shoemakermfg.com