

# SPIRAL PIPE DIFFUSERS



*The most comprehensive spiral diffuser offering in the HVAC industry.*



RS Series, Wework, Chicago



RS Series, Wework, Seattle

SD Series, Swiftwater Winery, Cle Elum, WA

## Options

PRODUCT OPTIONS	SD Series		RS Series		USR Series	
	SD52	SD34	RS52	RS34	USR52	USR34
Opposed Blade Damper	✓	✓	✓	✓	✓	✓
Full Scoop	✓	✓	✓	✓	✓	✓
Half Scoop	✓	✓	✓	✓	✓	✓
Designer/Std. Colors	✓	✓	✓	✓	✓	✓
Airfoil Blades	na	na	na	na	✓	✓
Perforated Face	✓	✓	✓	✓	✓	✓
Lattice Face	✓	✓	na	na	na	na
Linear Bar Face	✓	✓	na	na	na	na

## Shoemaker Services

### Expedited Service Options (does not include shipping)

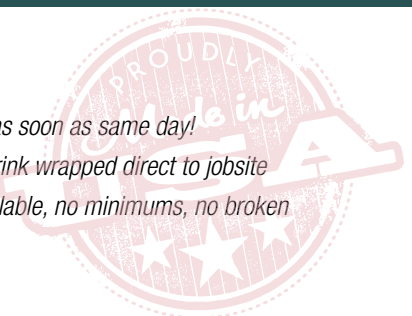
**NEXT DAY Fastest** GOLD EXPRESS

**2-3 DAY Most Popular** RED TAG

**4-6 DAY Highest Value** YELLOW TAG

Our standard service is 8-10 days, door to door.

- ✓ 8 to 10 days, door to door
- ✓ Expedited Services—ships as soon as same day!
- ✓ Packaged, palletized and shrink wrapped direct to jobsite
- ✓ Large volume discounts available, no minimums, no broken carton charges



# SPIRAL PIPE DIFFUSERS

The most comprehensive spiral diffuser offering in the HVAC industry



## Radius Spiral Pipe Diffuser

### RS52 Single Deflection

- Single deflection radius mount spiral pipe diffuser with adjustable blades
- Blades are parallel to the shortest dimension
- Allows for 2-way airflow adjustment
- Galvanized steel construction
- Nylon bushings on adj. blades prevent metal on metal rattle
- One piece curved frame with gasket fits flush to spiral pipe
- Product sizes available to fit spiral pipe sizes 6" – 48". Spiral pipe diameter must be 4" larger than width of diffuser.
- Galvanized Finish



### RS34 Double Deflection

- Double deflection radius mount spiral pipe diffuser with adjustable blades
- Front blades are parallel to shortest dimension
- Back blades are parallel to longest dimension
- Allows for 4-way airflow adjustment
- Galvanized steel construction
- Nylon bushings on adj. blades prevent metal on metal rattle
- One piece curved frame with gasket fits flush to spiral pipe
- Product sizes available to fit spiral pipe diameter 8" – 48." Spiral pipe diameter must be 4" larger than width of diffuser.
- Galvanized Finish



### RS-SS Stainless Steel

- Type 304 stainless steel
- Radius mount spiral diffuser
- Curved radius fits flush to spiral pipe
- Single deflection diffuser, horizontal or vertical blades
- 3/4" blade spacing
- Blades are parallel to the shortest dimension
- Allows for 2-way airflow adjustment
- Minimum size 4"x4"
- Satin polish finish



## Transition Box Spiral Pipe Diffuser

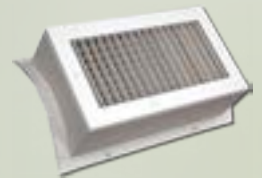
### SD52 Single Deflection

- Single deflection transition box mount spiral pipe diffuser
- Blades are parallel to the shortest dimension
- Allows for 2-way airflow adjustment
- Nylon bushings on adj. blades prevent metal on metal rattle
- Curved saddle with gasket provides airtight fit to spiral pipe
- Product sizes available to fit spiral pipe diameters 8" – 48." Spiral pipe diameter must be 4" larger than width of diffuser.
- Galvanized Finish



### SD34 Double Deflection

- Double deflection transition box mount spiral pipe diffuser
- Front blades are parallel to shortest dimension
- Back blades are parallel to longest dimension
- Allows for 4-way airflow adjustment
- Nylon bushings on adj. blades prevent metal on metal rattle
- Curved saddle with gasket provides airtight fit to spiral pipe
- Product sizes available to fit spiral pipe diameters 8" – 48." Spiral pipe diameter must be 4" larger than width of diffuser.
- Galvanized Finish



## Universal Spiral Pipe Diffusers

### USR52 Single Deflection

- Single deflection adjustable blade diffuser
- Blades are parallel to the shortest dimension
- Allows for 2-way airflow adjustment
- Galvanized steel construction
- Nylon bushings on adj. blades prevent metal on metal rattle
- High quality foam gasketing for tight seal with duct
- Product sizes available to fit spiral pipe sizes 6" – 48"
- Galvanized Finish



### USR34 Double Deflection

- Double deflection adjustable blade diffuser
- Front blades are parallel to shortest dimension
- Back blades are parallel to longest dimension
- Allows for 4-way airflow adjustment
- Galvanized steel construction
- Nylon bushings on adj. blades prevent metal on metal rattle
- High quality foam gasketing for tight seal with duct
- Product sizes available to fit spiral pipe sizes 6" – 48"
- Galvanized Finish

