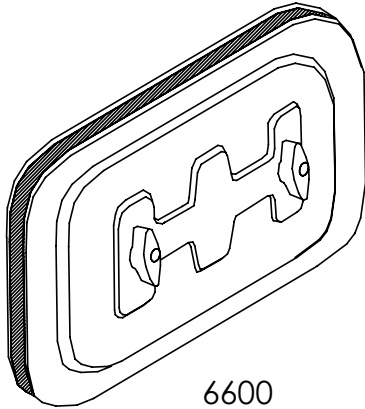


# Damper Louver Submittal

## Insulated Access Door

MODEL: 6600 Series



6600

### Standard Features:

- Provides easy access into air ducts and units, no tools required to open and close
- Three layers of precision stamped steel provide a solid, well-insulated, leak-proof door
- High density fiberglass insulation
- Simple installation
- Red polypropylene molded knobs with threaded metal inserts
- Zinc plated bolts are clinched and sealed to the inner door
- Self-adhesive template provided for exact size of duct opening required
- Mill Finish

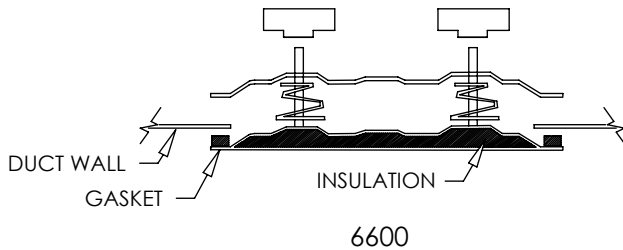
### Options:

- Observation door only, 4" x 2 5/8" window (6600-OD)
- High-temp access door, designed for high temperature applications up to 1000° F (6600-HT1)
- High-temp grease duct access door, designed for grease duct applications up to 2300° F (6600-HT2)

### Finishes:

STANDARD COLORS

- Mill Finish



6600

### Additional Information:

### Submittal Notes

Project / Location:	
Engineer:	
Architect:	
Contractor:	