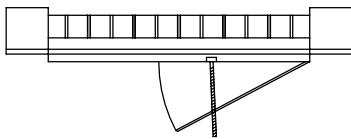


RS34



RS34-SC

Standard Features:

- Double deflection radius mount spiral pipe grille with adjustable blades
- Front blades are parallel to shortest dimension
- Back blades are parallel to longest dimension
- Allows for 4-way airflow
- Nylon bushings on adjustable blades allow for easy adjustment, and prevents metal on metal rattle for quiet operation
- One piece curved frame with gasket fits flush to spiral pipe
- Product sizes available to fit spiral pipe diameter 8" – 48". Spiral pipe diameter must be 4" larger than height of grille.
- Galvanized Finish

Options:

- Perforated face grille (RS-PERF)
- Recessed screwdriver operated Opposed Blade Damper (RS34-0)
- Half-length screwdriver operated Scoop Extractor (RS34-SC)
- Full-length screwdriver operated Scoop Extractor (20" max length scoop) (RS34-FS)

Finishes:

STANDARD COLORS

- Soft White
- Driftwood Tan
- Galvanized

DESIGNER COLORS

- Black
- Bronze
- Storm Gray
- Cement Gray

- Aluminum Paint
- Coffee Tan
- Warm White
- Glossy White

RS34 Series Size Chart

8 x 4	12 x 6	16 x 6	20 x 8
8 x 6	12 x 8	16 x 8	22 x 6
10 x 4	14 x 4	18 x 6	22 x 8
10 x 6	14 x 6	18 x 8	24 x 6
12 x 4	14 x 8	20 x 6	24 x 8

RS34 Series Size Chart

PRODUCT HEIGHT	DIMENSION*	8" DIA.	10" DIA.	12" DIA.	14" DIA.	16" DIA.	18" DIA.	20" DIA.	22" DIA.	24" DIA.	26" DIA.	28" DIA.	30" DIA.	32" DIA.	34" DIA.	36" DIA.	38" DIA.	40" DIA.	42" DIA.	44" DIA.	46" DIA.	48" DIA.
4	A	2 1/8	2	2	2	2	2	1 7/8	1 7/8	1 7/8	1 7/8	1 7/8	1 7/8	1 7/8	1 7/8	1 7/8	1 7/8	1 7/8	1 7/8	1 7/8	1 3/4	1 3/4
	B	5 3/8	5 1/2	5 5/8	5 3/4	5 3/4	5 3/4	5 3/4	5 3/4	5 7/8	5 7/8	5 7/8	5 7/8	5 7/8	5 7/8	5 7/8	5 7/8	5 7/8	5 7/8	5 7/8	5 7/8	5 7/8
6	A	n/a	2 1/2	2 3/8	2 1/4	2 1/4	2 1/8	2 1/8	2 1/8	2	2	2	2	2	2	2	2	1 7/8	1 7/8	1 7/8	1 7/8	1 7/8
	B	n/a	7	7 3/8	7 1/2	7 1/2	7 5/8	7 5/8	7 3/4	7 3/4	7 3/4	7 3/4	7 3/4	7 3/4	7 3/4	7 3/4	7 3/4	7 3/4	7 3/4	7 3/4	7 3/4	7 3/4
8	A	n/a	n/a	3	2 3/4	2 5/8	2 1/2	2 1/2	2 3/8	2 3/8	2 1/4	2 1/4	2 1/4	2 1/8	2 1/8	2 1/8	2 1/8	2 1/8	2 1/8	2	2	2
	B	n/a	n/a	8 3/4	9 1/8	9 1/4	9 3/8	9 1/2	9 4/8	9 5/8	9 5/8	9 5/8	9 3/4	9 3/4	9 3/4	9 3/4	9 3/4	9 3/4	9 3/4	9 3/4	9 3/4	9 3/4

Note* A/B dimensions defined in product drawings are dependent on size of spiral pipe for which product is designed for.

Additional Information:

Submittal Notes

Project / Location:	
Engineer:	
Architect:	
Contractor:	