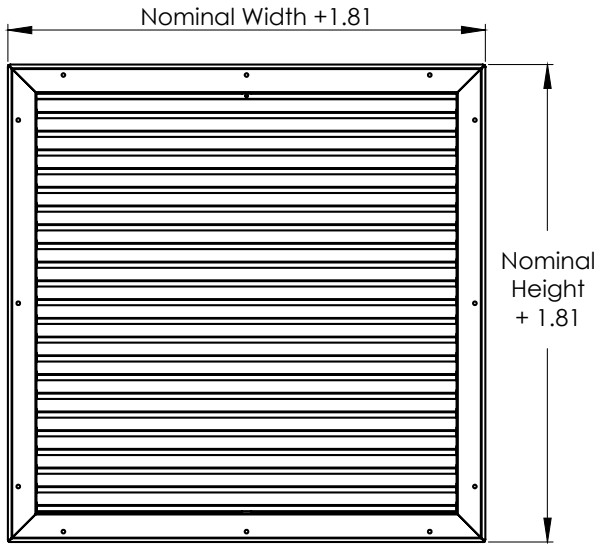


Commercial Submittal

Stainless Steel Louvered Door Grille with Auxillary Frame

MODEL: 4100-SS

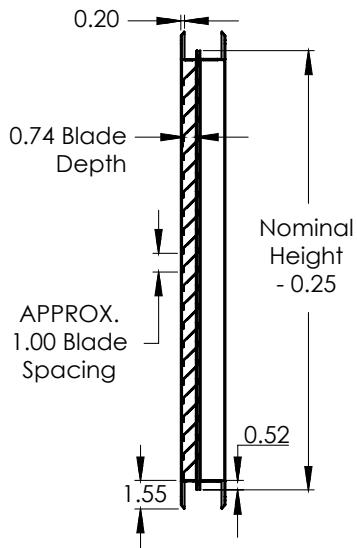
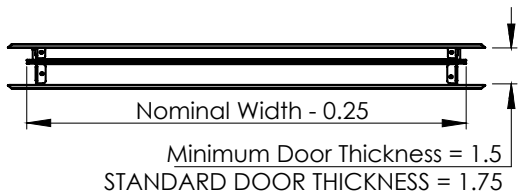


Standard Features:

- Type 304 stainless steel
- Fixed louvered blades parallel to the 1st dimension given
- Designed to transfer air with limited vision into wood or hollow doors
- Loose frame to complete finished look on both sides of door
- Countersunk mounting holes for flush appearance with stainless sheet metal screws
- Satin polished finish

Options:

- Type 316 stainless steel
- Tamper Proof Screws – stainless steel Torx Center Pin



Additional Information:

Submittal Notes

Project / Location:	
Engineer:	
Architect:	
Contractor:	